

Enterprise Mobility Project

By Vince Konwinski & Marcel LeClair



Problem Statement

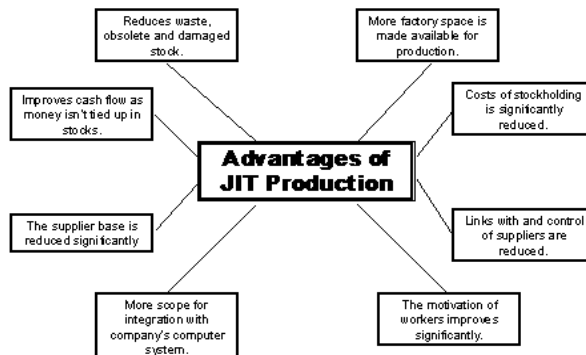
- ▶ Leaders of a nationwide electrical distribution company specializing in electrical fittings and components want to investigate a mobile business intelligence strategy to stay innovative, competitive, and possibly increase their capabilities, revenue/sales, and expand their national markets. After the company's strategic planning meeting, top administration approved \$60,000 to fund an enterprise mobility pilot project to explore new mobile technologies with business intelligence.

Reasons to Explore New Technologies

- ▶ Stay innovative
- ▶ Stay competitive
- ▶ Increase capabilities
- ▶ Increase revenue/sales
- ▶ Expand
- ▶ Be ready for the future



Just-In-Time Study (JIT)



Mobile Application Data

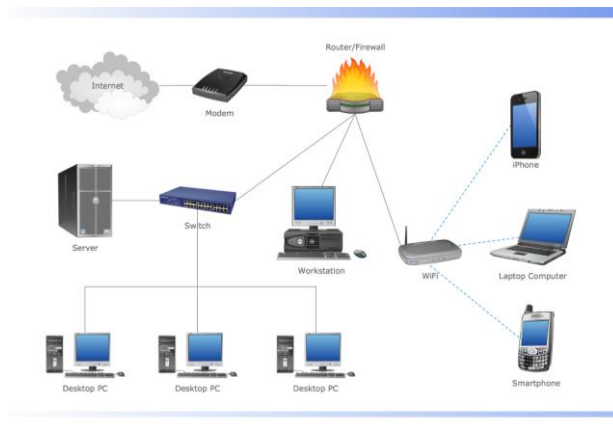
The following data are needed to fulfill the requirements for our mobile application:

- ▶ Order
- ▶ Item
- ▶ Timestamp
- ▶ Shipment
- ▶ Inventory
- ▶ Receipt/Pack list

Distribution Process

- ▶ Orders are made by in the field customers via a mobile device bar code scanner and sent to distribution center.
- ▶ Distribution warehouse fills complete order.
- ▶ Shipments are packaged for customers with detailed pack slip.
- ▶ Email confirmation and tracking information is sent to field customer's mobile device

Network Diagram



Companies

ASC Software

- ▶ ASCTrac WMS is an advanced-feature enterprise warehouse management system to solve demanding operational challenges of warehouse distribution, manufacturing, and 3rd party logistics organizations.
- ▶ The ASCTrac WMS is a complete solution that can also be interface to any ERP/financial system for a seamless and fully integrated ERP solution. From order entry, picking & packing, shipping operations, all the way to delivery
- ▶ Modular design to support any size of organization or complexity level



Companies

IBS

- ▶ IBS Enterprise Suite - Combines 6 powerful solution areas into one comprehensive business platform. Available in many deployment models.
- ▶ Streamlines the business
- ▶ Automates and accelerates the critical supply chain process
- ▶ Supplier management through warehouse optimizations
- ▶ Demand management
- ▶ Returns processing
- ▶ Optimized inventory
- ▶ Reduced labor and transportation costs

Companies

IBM

- ▶ IBM can help companies manage several different aspects of business by offering integrated hardware and software solutions that simplifies and streamlines the distribution environment to allow companies to benefit from new economic opportunities
- ▶ Manage the distribution lifecycle
- ▶ Increase insight for effective decision making
- ▶ Improve productivity
- ▶ Efficiency and responsiveness
- ▶ Reduce cost through increased flexibility
- ▶ Adapt to business change
- ▶ Achieve higher productivity and reliability

Companies

Logistic Solutions Inc.

- ▶ LSI Infrastructure management services enables a business to efficiently manage its IT infrastructure
- ▶ Achieve cost efficiencies and accelerated time to market
- ▶ Managed Database Services
- ▶ Managed Network & Communications Services
- ▶ Managed Storage & Backup Services
- ▶ Managed Security Services
- ▶ Managed Desktop Services
- ▶ Virtualization Services



Companies

Oracle

- ▶ Oracle provides wholesale distribution organizations with a complete, open, and integrated suite of business applications, server, and storage solutions engineered to work together to optimize every aspect of a business
- ▶ Transportation Management
- ▶ Enterprise Performance Management Solution
- ▶ Financial Management Solution
- ▶ Human Capital Management Applications
- ▶ Retail Warehouse Management
- ▶ Inventory Optimization

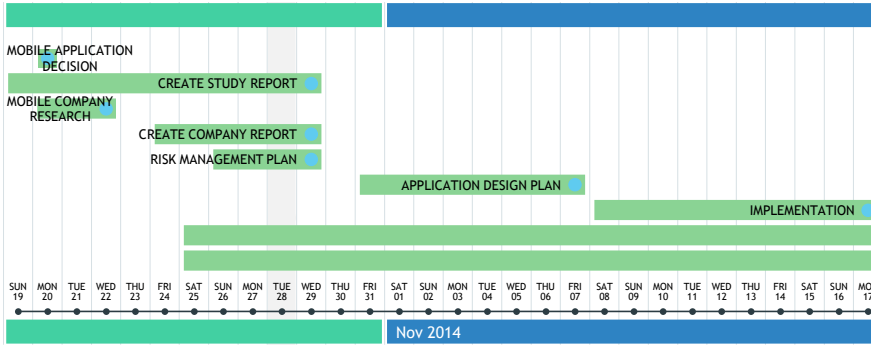
Risk Assessment

RISK ASSESSMENT FORM								
Project Name		Enterprise Mobility Pilot Project						
Prepared By		Vince Kowinski & Marcel Leclair						
Date		10/25/2014						
Type	Risk Description IF	Consequence Then	Likelihood (1-5)	Severity (1-5)	Score	Rank	Response	Description of Response
1. Technical	Program crashes and does not reboot	Loss of all data and program files	1	5	5	Moderate	avoid	make sure to back up and have copies of all work
2. Technical	Application does not function properly	Company is left with a nonworking application	4	5	20	Severe	avoid	make sure to thoroughly test and implement proper changes
3. Technical	Errors with coding	Programs does not function properly	5	5	25	Severe	avoid	test and debug constantly and let more than one team member read the code
4. Schedule	Not Enough time allocated to complete programming and testing	Project will not be completed on time	3	4	12	Moderate	avoid	make and stick to a schedule
5. Schedule	Team members work/ school schedules conflict	Less time spent on the project	3	3	9	Minor	deal with	plan ahead with partners to fill in the needed work
6. Schedule	Change orders for the design of the application	Need for change and update with the schedule to meet demand	1	2	2	Minor	deal with	change and update schedule and plan of action
7. Budget	Not enough money allocated for man hours/resources spent on the project	Would have to settle for a smaller profit	1	4	4	Significant	mitigate	Either agree to make less profit or negotiate with company for more funding
8. Budget	Added functions and upgraded software needed to be purchased	Unexpected money spent on needed software that takes away from profit	2	4	8	Significant	mitigate	Make sure the proper software is used and allocate excess money for rework.

Risk Matrix

Risk Matrix					
Severity	1	2	3	4	5
Probability	Negligible	Minor	Moderate	Significant	Severe
5					3
4					2
3			5	4	
2				8	
1		6		7	1

Project Timeline



Time Duration

ACTIVITY	START	END
Start	10/4/2014	
Mobile Application Requirements	10/4/2014	10/4/2014
Team Meeting for Mobile App	10/5/2014	10/8/2014
Mobile Application Decision	10/20/2014	10/20/2014
Create Study Report	10/15/2014	10/29/2014
Mobile company Research	10/20/2014	10/22/2014
Create company Report	10/24/2014	10/29/2014
Risk Management Plan	10/26/2014	10/29/2014
Application Design Plan	10/31/2014	11/7/2014
Implementation	11/8/2014	11/17/2014
Installation	11/18/2014	11/24/2014
Testing/Debugging	11/24/2014	12/05/2014
Study Results	12/05/2014	12/07/2014
Create Project Document	10/25/2014	12/10/2014
Create Powerpoint Presentation	10/25/2014	12/10/2014
Presentation to Company Board	12/12/2014	12/12/2014
Project End	12/12/2014	

Milestones

- ▶ Mobile Application Decision, 10/20/2014
- ▶ Finish Company Report, 10/29/2014
- ▶ Finish Application Design Plan, 11/07/2014
- ▶ Finish Testing/Debugging, 12/05/2014
- ▶ Finish Project Document and PowerPoint, 12/10/2014
- ▶ Final Presentation to Board, 12/12/2014

References

- ▶ [1] Preparing a risk management plan and business impact analysis, October 2014, <http://www.business.qld.gov.au/business/running/risk-management/risk-management-plan-business-impact-analysis>
- ▶ [2] Oracle Wholesale Distribution, <http://www.oracle.com/us/industries/wholesale/solutions/index.html>
- ▶ [3] Solutions for Distribution, http://www.ibm.com/solutions/alliance/us/en/index/infor_distribution.html
- ▶ [4] Just in Time Production, Steve Margetts, <http://www.revisionguru.co.uk/business/jit.htm>
- ▶ [5] IBS Business Suite 2015, IBS 2014, <http://www.ibs.net/en/products/IBS-Business-Suite-2015/>
- ▶ [6] IT Infrastructure Management Services, Logistic Solutions Inc, 2013, http://www.logistic-solutions.com/infrastructure/ims_services.html
- ▶ [7] Integrated Warehouse Solutions For Distribution Operations, ASC, 2014, <http://www.ascsoftware.com/solutions/asctrac/asc-warehouse-management-systems.aspx>
- ▶ [8] What do we really mean by supply chain management?, Leif Enarsson, 2009, <http://www.supplychainquarterly.com/topics/Logistics/scq200901book/>