

CPET 499/565 MOBILE ENTERPRISE PILOT PROJECT – MOBILE DEVICE MANAGER

BY: COLE VANDERMOTTEN

10.27.14

Mobile Device Management

- Secure devices that are affiliated with the company
- Keep them guarded and maintained
- Use them to help move the company forward



What it Brings

- Instant Messaging
- Company facts and figures – always up-to-date

- Email and Web-browsing securely



- The ability for the phone to be wiped remotely

Just-In-Time (JIT)

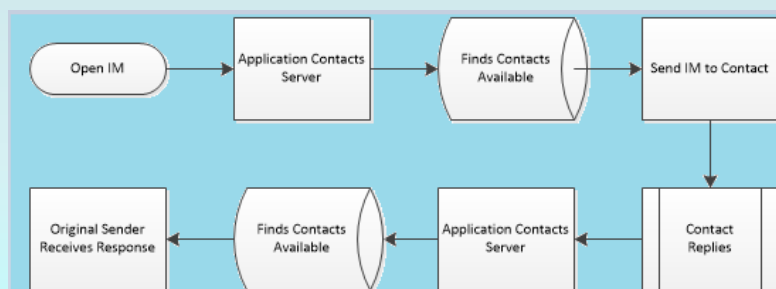
- What it is...
 - An attempt to remove waste from production/business
 - Management philosophy created in Japan
 - Looks to streamline and improve production



JIT and MDM

- The MDM allows for faster response times between team members by using IM
- Provides constant up-to-date status information
 - This removes the necessity to gather this information manually
- Helps streamline production through constant connectivity

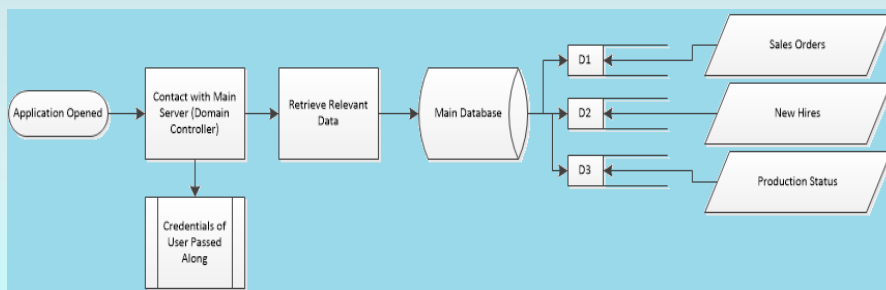
Instant Messaging Data Flow



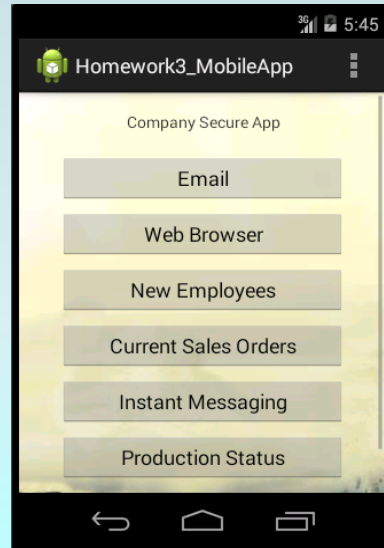
System Requirements for IM'ing

- Local Application on company phones
- Server for connecting users
- Freeware for encrypting IM's
- Domain credentials for login and use of IM application

Service Architecture



- Mock-up of pilot project
- Can be installed on any Smartphone OS with the exception of iOS – out of principle of course
- Simple, sleek interface
- Quick to Learn, Easy to Use



Other Options

- The following companies all provide a similar product with fewer capabilities:
 - AirWatch
 - Fiberlink
 - MobileIron
 - BoxTone
 - IBM



Development Risks

Risk Ranking

		1	2	3	4	5	
		Insignificant:	Minor:	Moderate:	Major:	Catastrophic:	
		minor problem easily handled by day to day processes	some disruption possible	significant time / resources required	operations severely damaged	project survival is at risk	
Likelihood	5 Almost Certain: >90% chance						
	4 High: 50 - 90% chance						
	3 Moderate: 10 - 50% chance		Total Expense Rises	Wrong Data is Presented			
	2 Unlikely: 3 - 10% chance		App Damages Phone				
	1 Rare: <3% chance				Application Fails to Load		
		1	2	3	4	5	
		Severity					