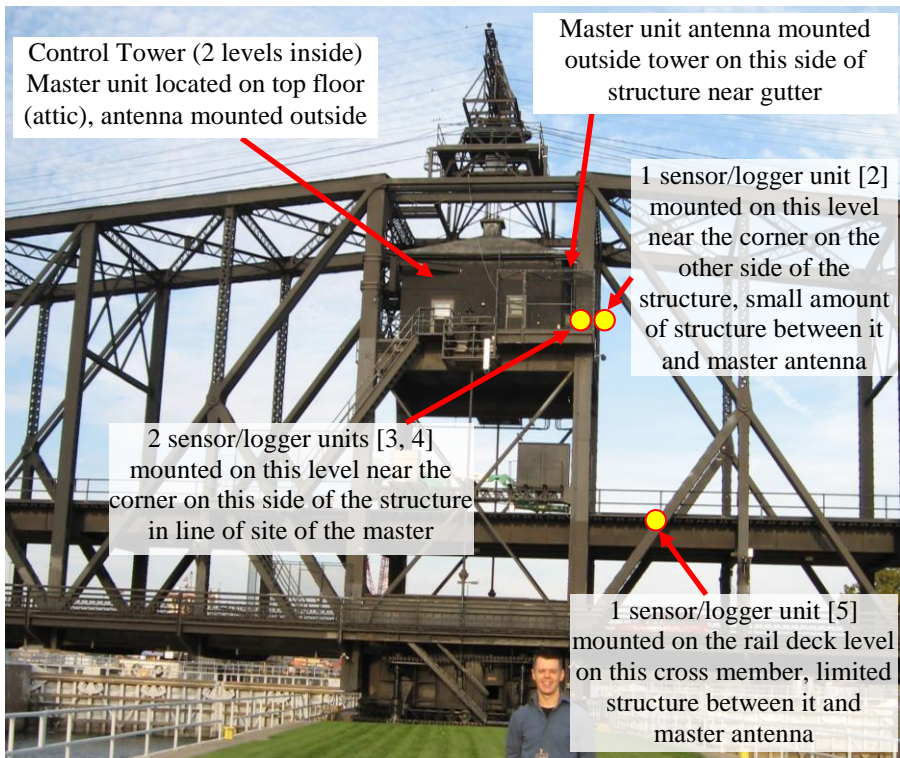
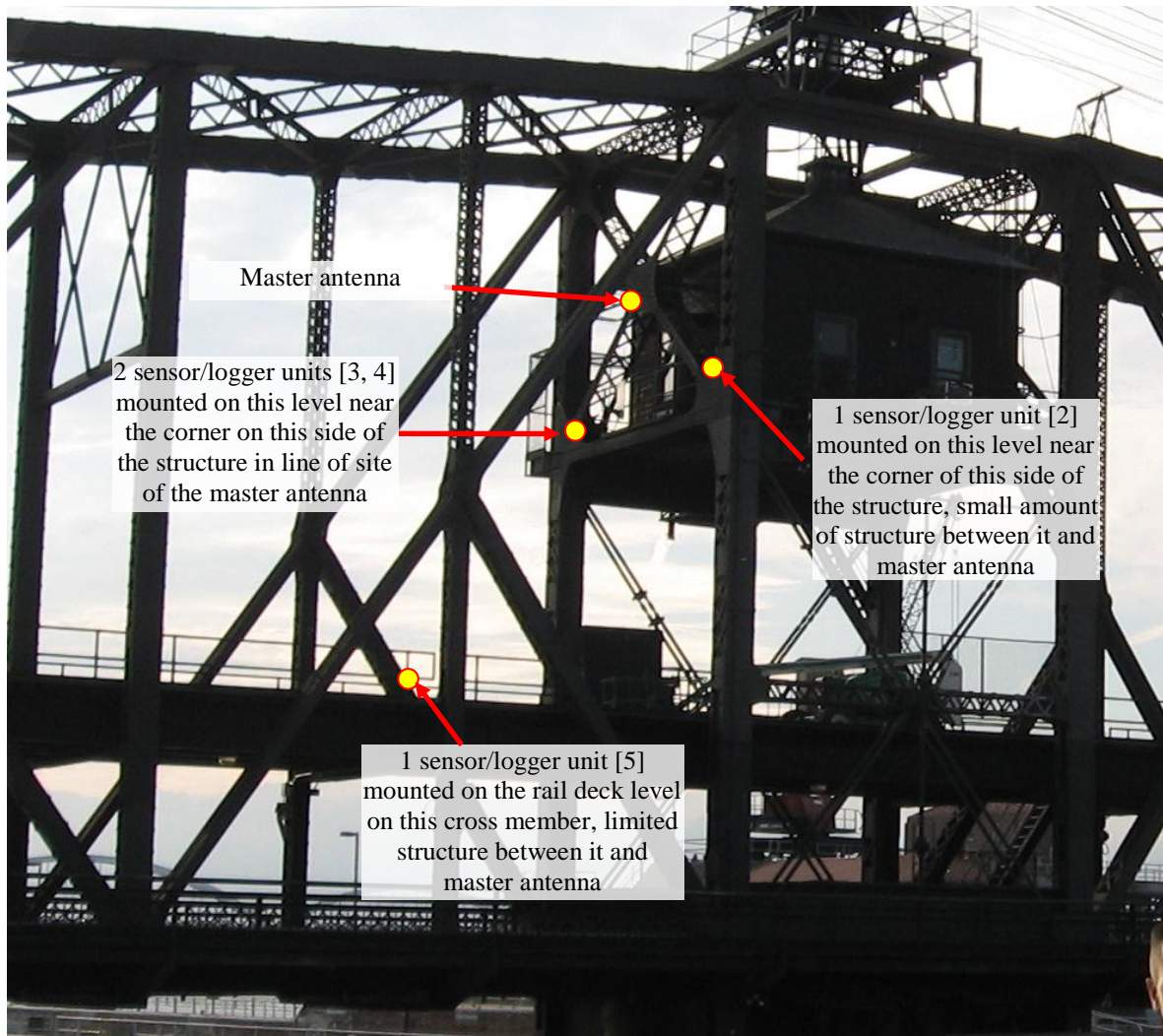
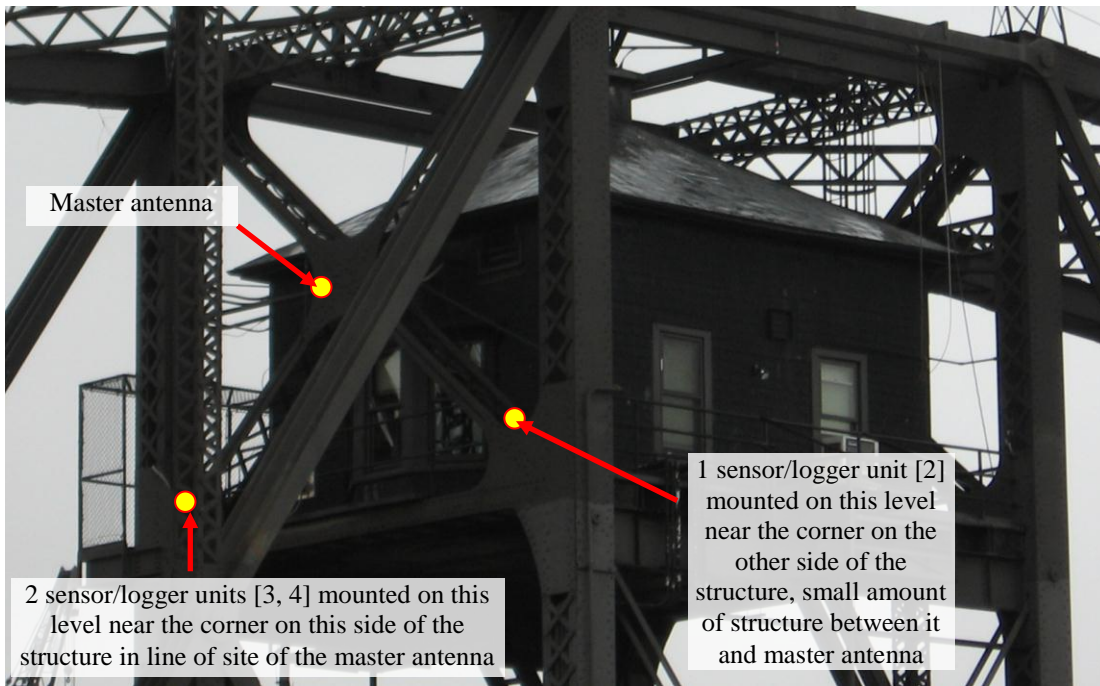


Locations of ER Sensors and Wireless Units



View of Arsenal bridge from side 1





Photos of Units 3 and 4



Photo showing the locations of Units 3 and 4

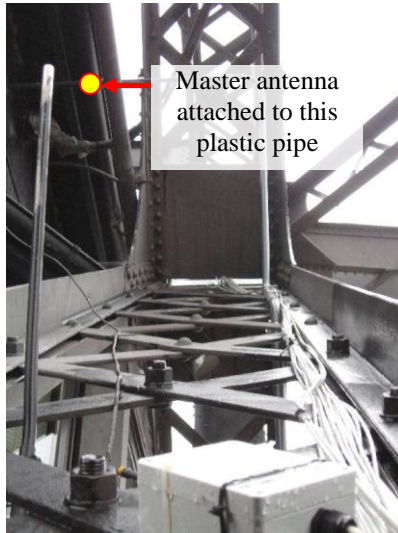


Photo taken from beneath Unit 3 looking upward towards master antenna

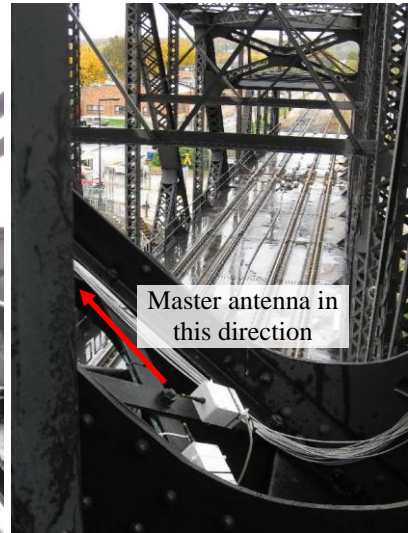


Photo showing the locations of Units 3 and 4, rail deck in background

Photos of Unit 2

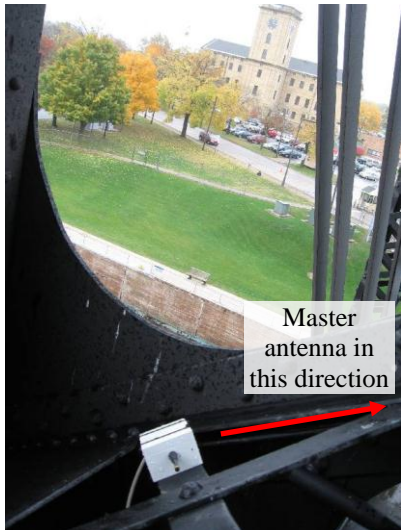


Photo showing the location of Unit 2



Photo showing the location of Unit 2 with rail deck in background

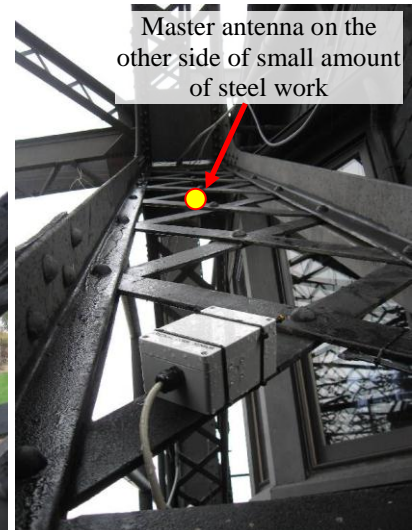


Photo showing the location of Unit 2 looking up towards master antenna

Photos of Unit 5

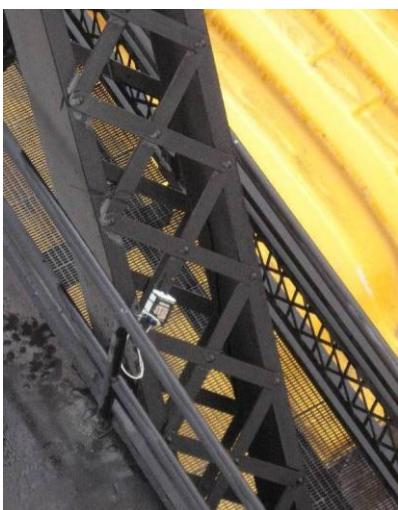


Photo of Unit 5 taken from Control Tower deck



Photo of Unit 5 taken from Control Tower deck, master antenna a couple of meters above where photo taken



Photo of Unit 5 taken from Control Tower deck

Jennifer Chandler-Chandler Monitoring Systems, Inc.



Keith suggests that the 4 Sol-Gel Sensors be placed below the car deck on the bridge member closest to the SECOND water drain pipe to catch evidence of the most splash-back on the bridge members (circled area). Two sensors should be placed directly across from one another on each side of the control house, for a total of four locations, forming a “rectangle”, around the control house. The dummy sensor can be located up top, nearest the control house as seen in the original CIEAM plans.

TOP-DOWN VIEW

